

4-Speed Transmission

Index

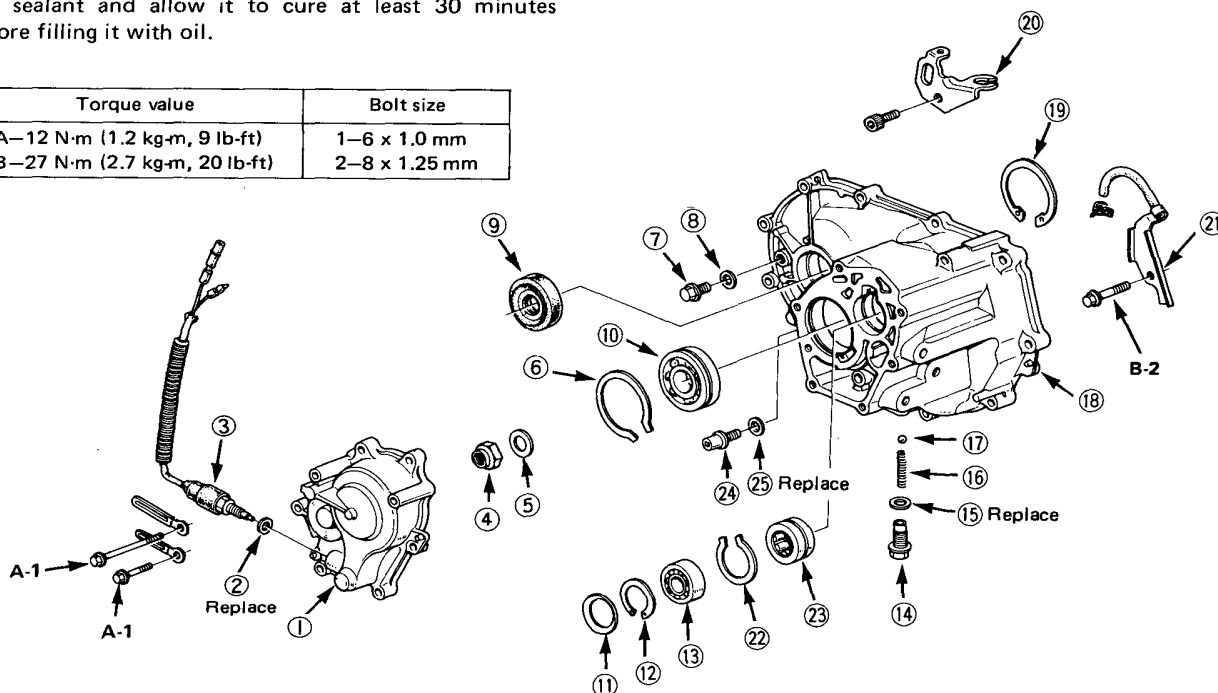
Clean all parts thoroughly in solvent and dry with compressed air.



Lubricate all parts with oil before reassembly.

NOTE: This transmission uses no gaskets between the major housings; use Honda P/N 08740-99986 sealant. Assemble the housings within 20 minutes after applying the sealant and allow it to cure at least 30 minutes before filling it with oil.

Torque value	Bolt size
A-12 N·m (1.2 kg·m, 9 lb·ft)	1-6 x 1.0 mm
B-27 N·m (2.7 kg·m, 20 lb·ft)	2-8 x 1.25 mm



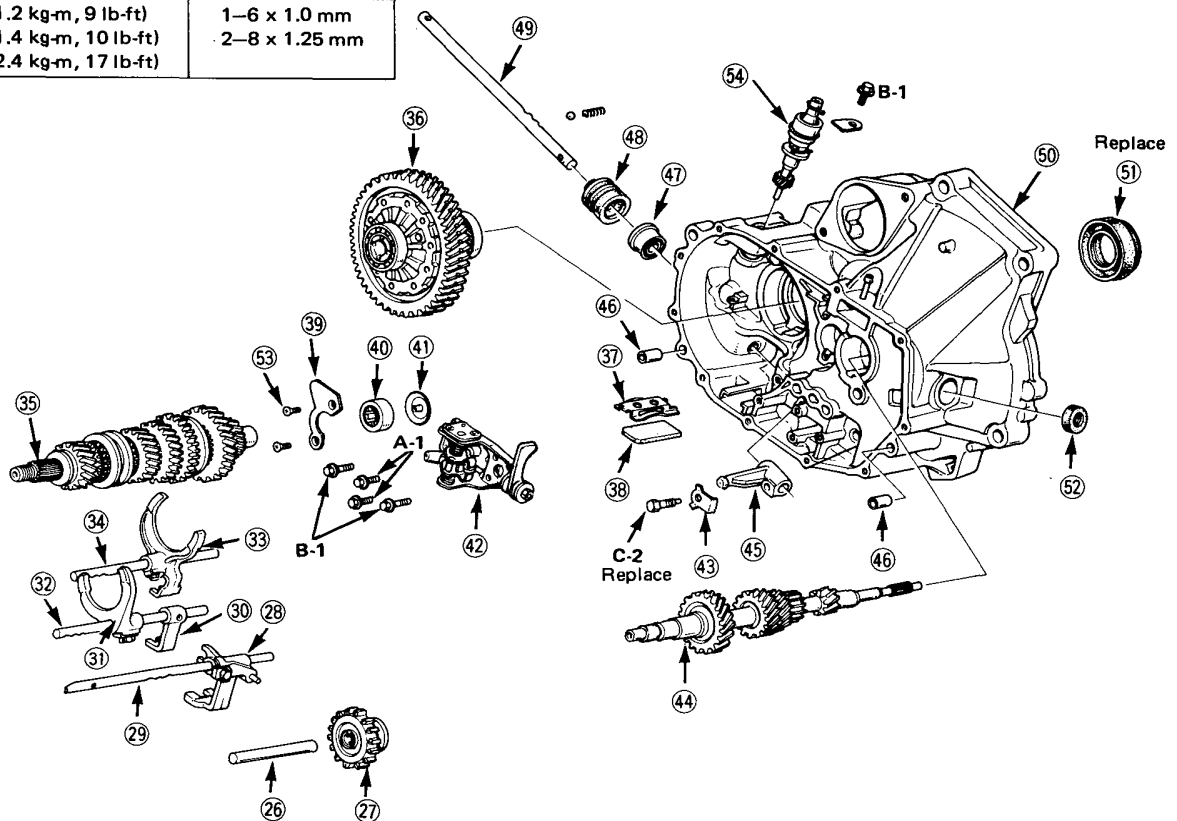
- ① **END COVER**
Removal, page 14-7
- ② **14 mm WASHER**
- ③ **BACK-UP LIGHT SWITCH**
Inspection, page 14-38
- ④ **COUNTERSHAFT LOCKNUT**
- ⑤ **SPRING WASHER**
- ⑥ **SNAP RING 65 mm**
- ⑦ **OIL FILLER BOLT**
- ⑧ **WASHER**
- ⑨ **SEAL**
Removal, page 14-19
Installation, page 14-35
- ⑩ **BALL BEARING**
- ⑪ **SPRING WASHER 52 mm**
- ⑫ **SNAP RING**
Removal, page 14-7
Installation, page 14-7
- ⑬ **BALL BEARING**

- ⑭ **DETENT BALL RETAINER SCREW**
- ⑮ **WASHER**
- ⑯ **DETENT SPRING**
- ⑰ **DETENT BALL**
- ⑱ **TRANSMISSION HOUSING**
- ⑲ **SNAP RING 72 mm**
- ⑳ **CLUTCH CABLE BRACKET**
- ㉑ **BREATHER TUBE ASSEMBLY**
- ㉒ **SNAP RING 45 mm**
- ㉓ **NEEDLE BEARING**
- ㉔ **OIL DRAIN PLUG**
- ㉕ **WASHER**



NOTE: Always clean the magnet (38) whenever the transmission housing is disassembled.

Torque value	Bolt size
A—12 N·m (1.2 kg-m, 9 lb-ft)	1—6 x 1.0 mm
B—14 N·m (1.4 kg-m, 10 lb-ft)	2—8 x 1.25 mm
C—24 N·m (2.4 kg-m, 17 lb-ft)	



- 26 REVERSE IDLER GEAR SHAFT
- 27 REVERSE IDLER GEAR
Removal, page 14-10
Installation, page 14-31
- 28 REVERSE SHIFT GUIDE
- 29 REVERSE SHIFT SHAFT
- 30 3rd SHIFT SHAFT GUIDE
- 31 3rd/4th GEAR SHIFT FORK
- 32 3rd/4th GEAR FORK SHAFT
- 33 1st/2nd GEAR SHIFT FORK
- 34 1st/2nd GEAR FORK SHAFT
- 35 COUNTERSHAFT ASSEMBLY
Measurement, page 15-8
- 36 DIFFERENTIAL
Removal, page 14-19
Disassembly, Section 17
- 37 HOLD-DOWN PLATE
- 38 MAGNET
- 39 BEARING RETAINER PLATE
- 40 NEEDLE BEARING
- 41 OIL BARRIER PLATE
- 42 SHIFT ARM HOLDER
- 43 LOCK PLATE

- 44 MAINSHAFT
- 45 GEAR SHIFT ARM
- 46 DOWEL PIN
- 47 SEAL
- 48 BOOT
- 49 GEAR SHIFT ROD
- 50 CLUTCH HOUSING
- 51 SEAL
- 52 DUST SEAL
- 53 FLAT SCREW
- 54 SPEEDOMETER DRIVEN GEAR